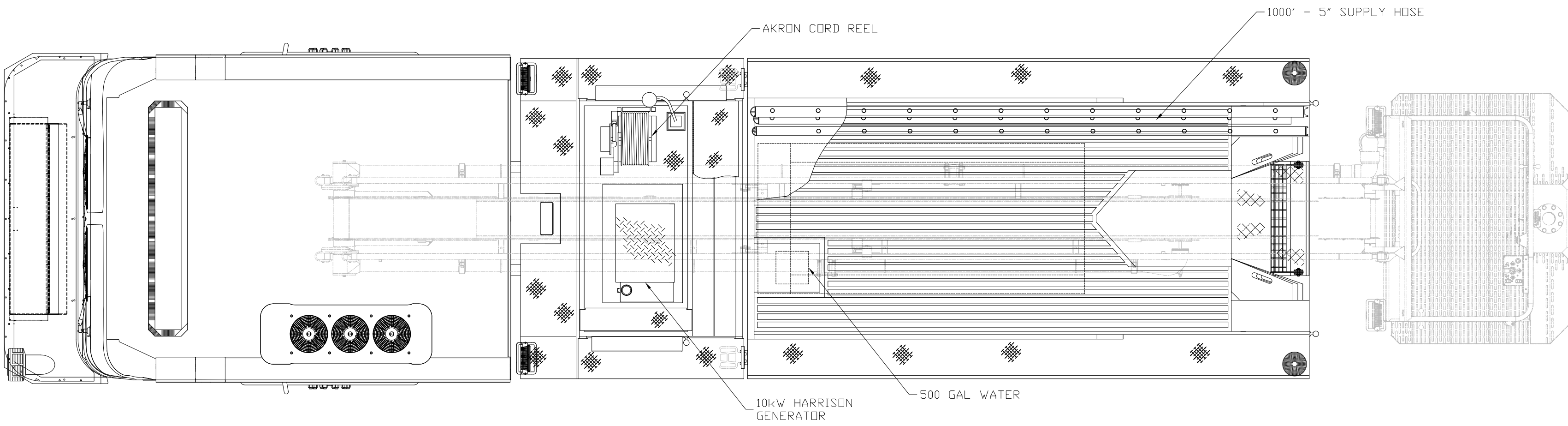
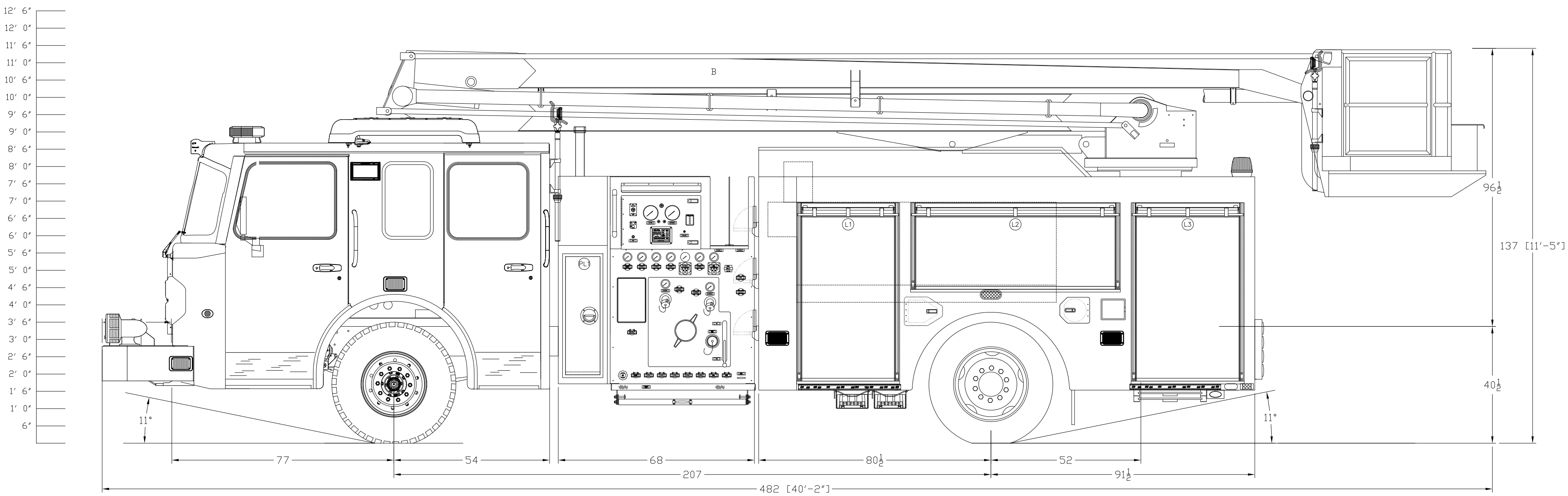


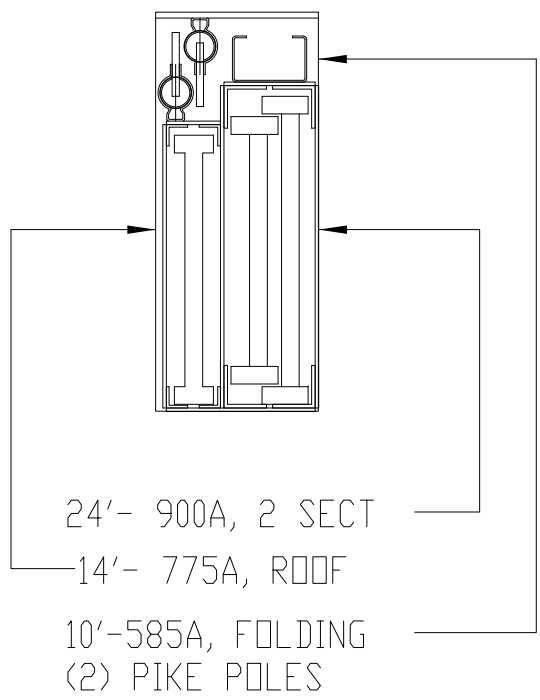
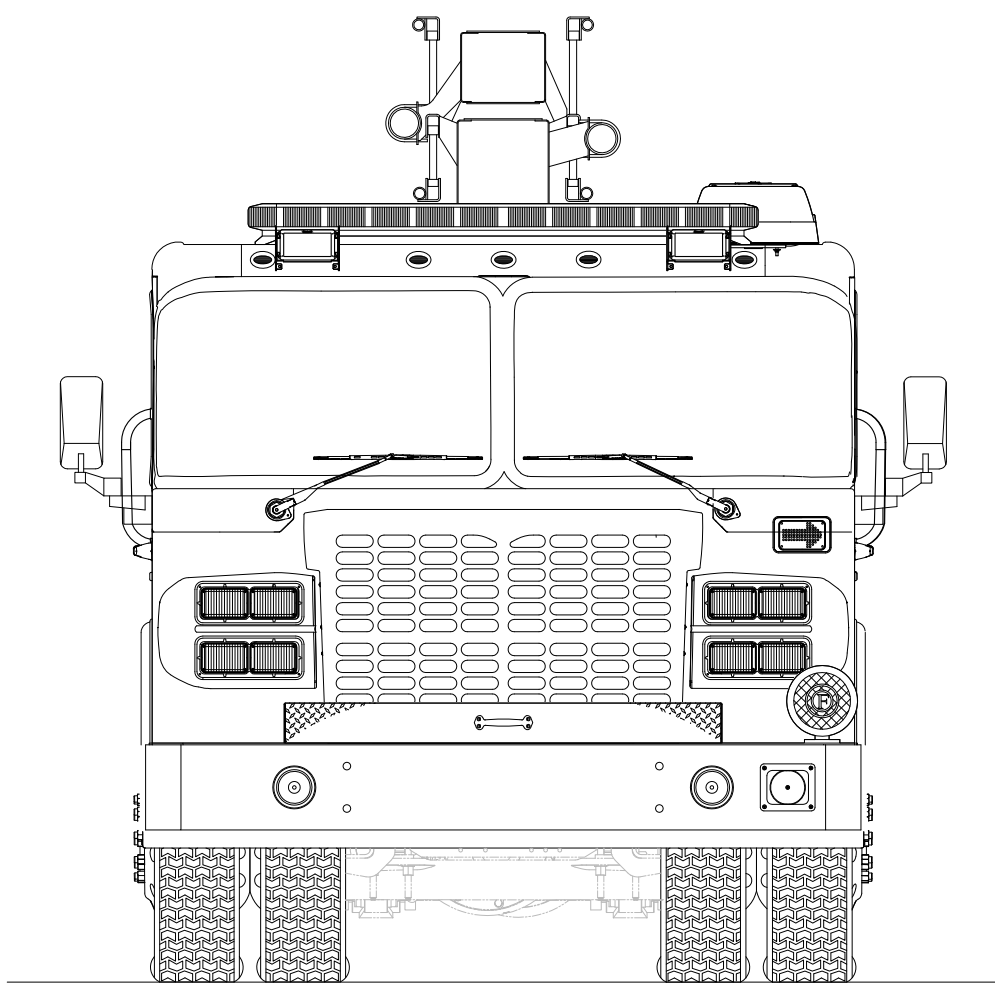
OFFICER'S VIEW



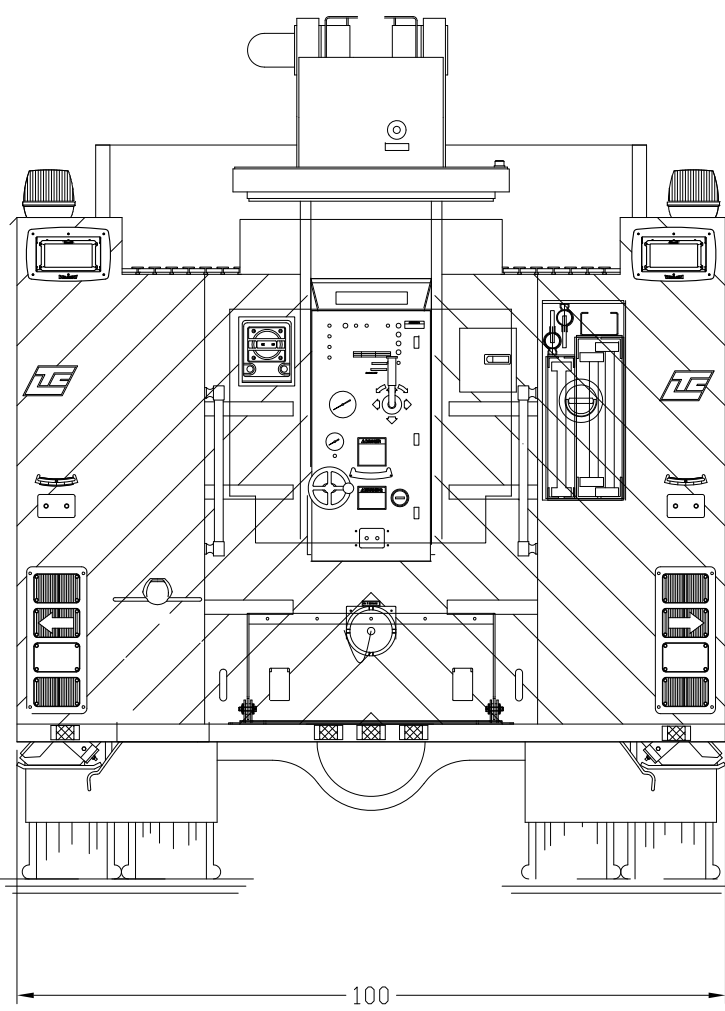
TOP VIEW



DRIVER'S VIEW

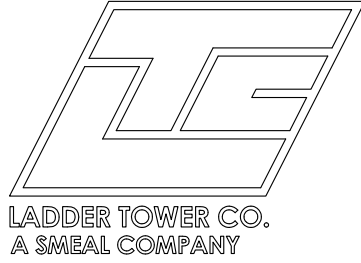


LADDER BANKING



EXTERNAL COMPARTMENTS:			
COMPT.	CLEAR DOOR OPENING (W x H):	COMPARTMENT INTERIOR (W x H x LD/UD):	NOTES:
PL1/PR1	12.00W X 64.00H	17.00W X 67.875.75H X 24.00D	
L1	32.00W X 55.875H	35.00W X 69.75H X 25.50D	
L2	69.00W X 24.00H	72.00W X 37.875H X 25.50D	
L3	35.5W X 55.875H	38.75W X 69.75H X 25.50D	
R1	32.00W X 55.875H	35.00W X 69.75H X 12.00D UPPER 25.50D LOWER	INT. DIVIDE: 29.875"
L2	69.00W X 24.00H	72.00W X 37.875H X 12.00D	
L3	35.5W X 55.875H	38.75W X 69.75H X 12.00D UPPER 25.50D LOWER	INT. DIVIDE: 29.875"

REV.	REVISION NOTE / CD#:	DATE:	DRAWN BY:
1	INITIAL DRAWING	5/12/16	CL



LADDER TOWER CO.
A SMEAL COMPANY

Units:
Inches

Frame Height:
40.5"±

Customer:
LTC STOCK 55' SNORKEL

City / State:
EPHRATA, PA

Dwg. File:
16309-01

Quote Number:

Sheet:
1 of 1

Rev:

Tolerance:
Lin: ±.50" Ang: ±.50°

Dealer:

S/N:

Quote Number:

BUILD FACILITY: EPHRATA, PA

City / State:
EPHRATA, PA

Sheet:
1 of 1

Rev: